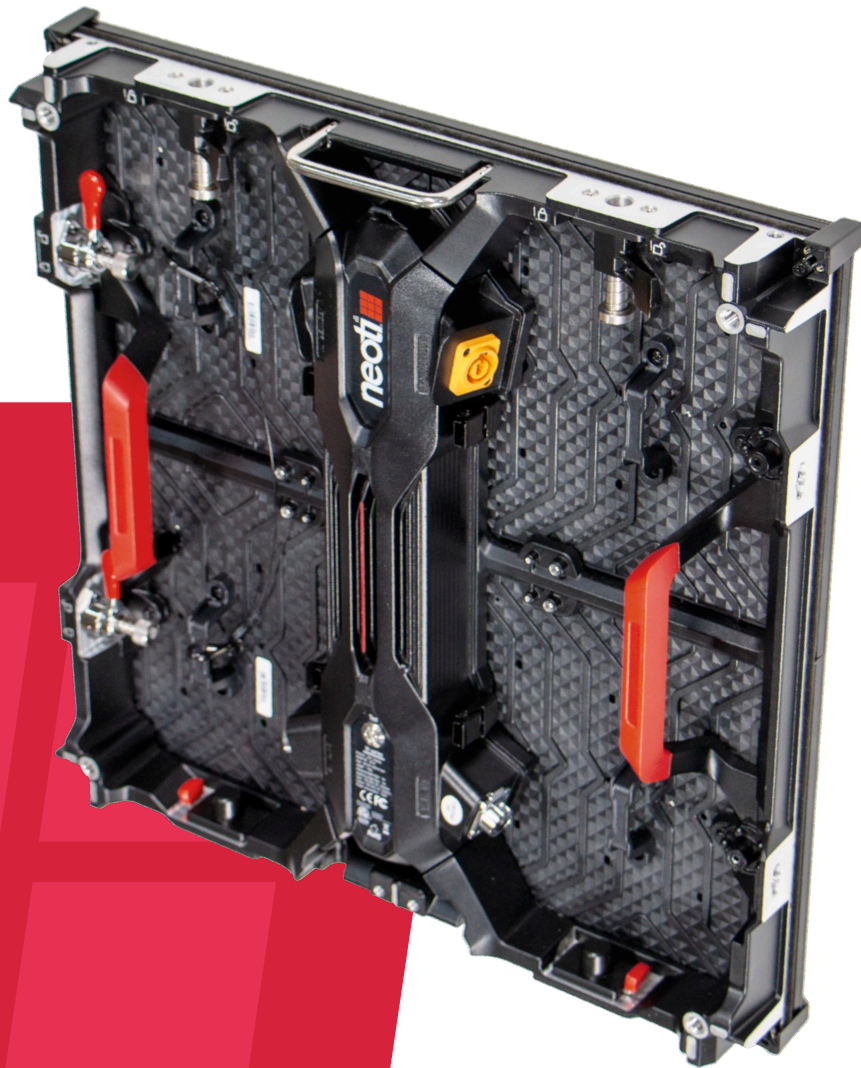


# LW Series

Direct-View LED Displays



**neoti** 



## LW Series Specifications

**2.6 - 4.8**  
Pixel Pitch

**Curveable**  
Concave & Convex

**Front  
& Rear**  
Install & Service

		LW26I	LW29I	LW39I	LW39O	LW48O
<b>DISPLAY PROPERTIES</b>	<b>Pixel Pitch</b>	2.6 mm	2.97 mm	3.9 mm	3.9 mm	4.8 mm
	<b>Resolution (H/V)</b>	192x192 px	168x168 px	128x128 px	128x128 px	104x104 px
	<b>Brightness</b>	1000 nits			5000 nits	
	<b>Refresh Rate</b>	≤ 3840 Hz			≤ 3840 Hz	
	<b>Contrast</b>	3000:1			3000:1	
	<b>Color Depth</b>	14-16 bit			14-16 bit	
	<b>Viewing Angle (H/V)</b>	140° / 140°			140° / 140°	
	<b>Diode Type</b>	SMD 1515			SMD 1515	
<b>ENGINEERING</b>	<b>Panel Weight</b>	16.53 lbs			17.2 lbs	
	<b>Panel Dimensions</b>	Metric: 500 x 500 x 82mm / Imperial: 19.68 x 19.68 x 3.22 in (WxHxD)				
	<b>Installation &amp; Service</b>	Front and Rear Access				
	<b>Operating Voltage</b>	AC 200 ~ 240V (50 ~ 60Hz)				
	<b>Panel Power</b>	500 / 165 W/m <sup>2</sup>			570 / 190 W/m <sup>2</sup>	
	<b>Temperature</b>	Operating: -4°F ~ +122°F / Storage: -40°F ~ +140°F				
	<b>Humidity</b>	Operating: 10 - 90% RH / Storage: 10 - 90% RH				
	<b>Environment Rating</b>	IP40 (Front) / IP21 (Rear)			IP 65 (Front) / IP54 (Rear)	
<b>Certifications</b>	RoHS, CCC					

Specifications are accurate at time of printing. Actual specifications may vary due to customizations or updates. Specifications should be confirmed upon ordering.